

## DP-15

Digital Ultrasonic Diagnostic Imaging System



## Powerful B/W System with Full Screen

With the best-in-class combination of performance and ergonomic design, DP-15<sup>5Power</sup> edition is an ideal choice for B/W system. Excellent image quality with auto measurement meets the requirements of different applications, helping you to enhance your diagnostic confidence. High definition LED with full screen design of DP-15<sup>5Power</sup> edition provides you with new operation experience.

### Exceptional Ergonomic Design

- 12.1 inch high definition LED
- Full Screen design for easy cleaning
- 30 degree tilting angle adjustable monitor
- Maximum 2 universal transducer connectors
- User friendly control panel with backlit
- Light and compact design for extreme portability

### Streamlined Workflow

- iScanHelper offers ultrasound tutorial for your practice
- iStorage for instant images and reports transfer to PC
- iTouch for quick image optimization
- iZoom for instant full screen image zoom
- Optional 1.5h uninterrupted scanning with
- rechargeable battery 500GB hard disk for large patient data storage

### Enhanced Diagnostic Confidence

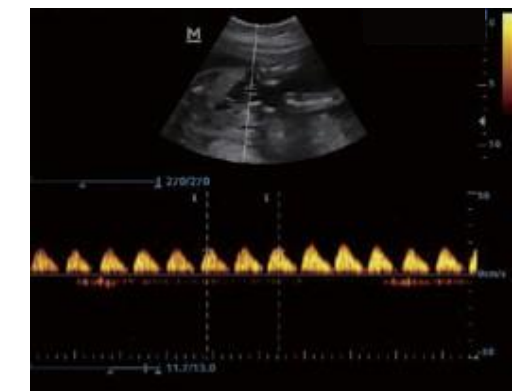
- AutoTrac reveals details of blood flow for more comprehensive diagnosis
- Tissue Harmonic Imaging for enhanced contrast resolution
- iClear for Speckle Reduction Imaging, providing clear and sharp lesion contours
- IP (Image Processing) for fast image optimization
- 8-TGC assuring accurate image uniformity control



Liver



Uterus



PW Doppler image of umbilical cord



Thyroid