

MANUFACTURE STANDARD, MANUFACTURE RELIANCE

# RT-1904C

## Semi-auto Chemistry Analyzer

DISPLAY ANGLE-  
ADJUSTABLE

SELF CHECKING



### Features

- Easy Windows operation system with mouse, large color LCD display
- Reagent open system supports flow cell and cuvette mode, close system on request
- Analytical modes include kinetic, fixed time, bichromatic end point with or without reagent blank or sample blank, linear or non-linear calibration
- Real-time curve monitoring enhances the reliability of result
- Large memory, up to 200 test protocols can be programmed
- Powerful QC function: Westguard Multi-rule, Levey Jennings plot, 2 controls per test
- Auto power-on self-check
- Additional lamp saving
- Multiform result output including patient comprehensive report
- Software optional for date management in PC
- Easy maintenance, no service engineers required to change lamp, tube etc

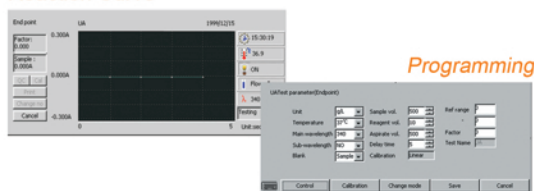
# RT-1904C

## Semi-auto Chemistry Analyzer

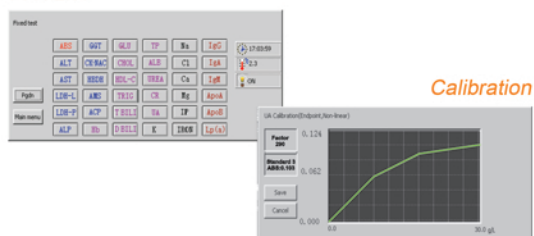
Test Report		
General		Date: 28/10/2003
Sample No: 03	Name: XXX	Sex: Male Age: 28
Dept.: xx	Patient No: 003	Sender: XXX
Test	Result	REF Range
ALT	39.311U/L	0.00-40.00
AST	110.239U/L	0.00-37.00
TP	98.225 g/L	46.00-87.00
ALB	52.055 g/L	38.00-44.00



### Reaction Curve



### Test List



### Quality Control



### Technical Specifications

Photometric Range	-0.500-3.500Abs
Resolution	0.001Abs(displayed), 0.0001Abs(calculated)
Light Source	Halogen lamp, 6V/10W
Wavelengths	340,405,500,546,578,620,670nm, 1 more filter optional
Wavelength Accuracy	±2nm
Band Width	≤ 10nm
Aspirate Volume	100-3000ul
Cross Contamination Rate	<1%
Memory	200 test protocols, up to 3000 test results
Interface	RS-232, PSTN (optional)
Flow Cell	25µl Metal-quartz flow cell
Cuvette Mode	12.5mmx12.5mm cuvette optional
Temperature Control	25°C, 30°C, 37°C ±0.5°C
Display	7" color LCD
Input	External mouse and optional external keyboard
Output	Built-in printer or external printer (optional)
Net Weight	8KG
Dimensions L × W × H (mm)	460×330×190
Power Supply	AC 110V/220V±10%, 50Hz/60Hz

### Rayto Life and Analytical Sciences Co.,Ltd.

Rayto Industrial Building, Shuangming Blvd South,  
East Hi-Tech Park, Guangming New District,  
518107 Shenzhen, P.R.China.  
Tel:+86(755)88832350 Fax:+86(755)86168796  
Email:info@rayto.com

